

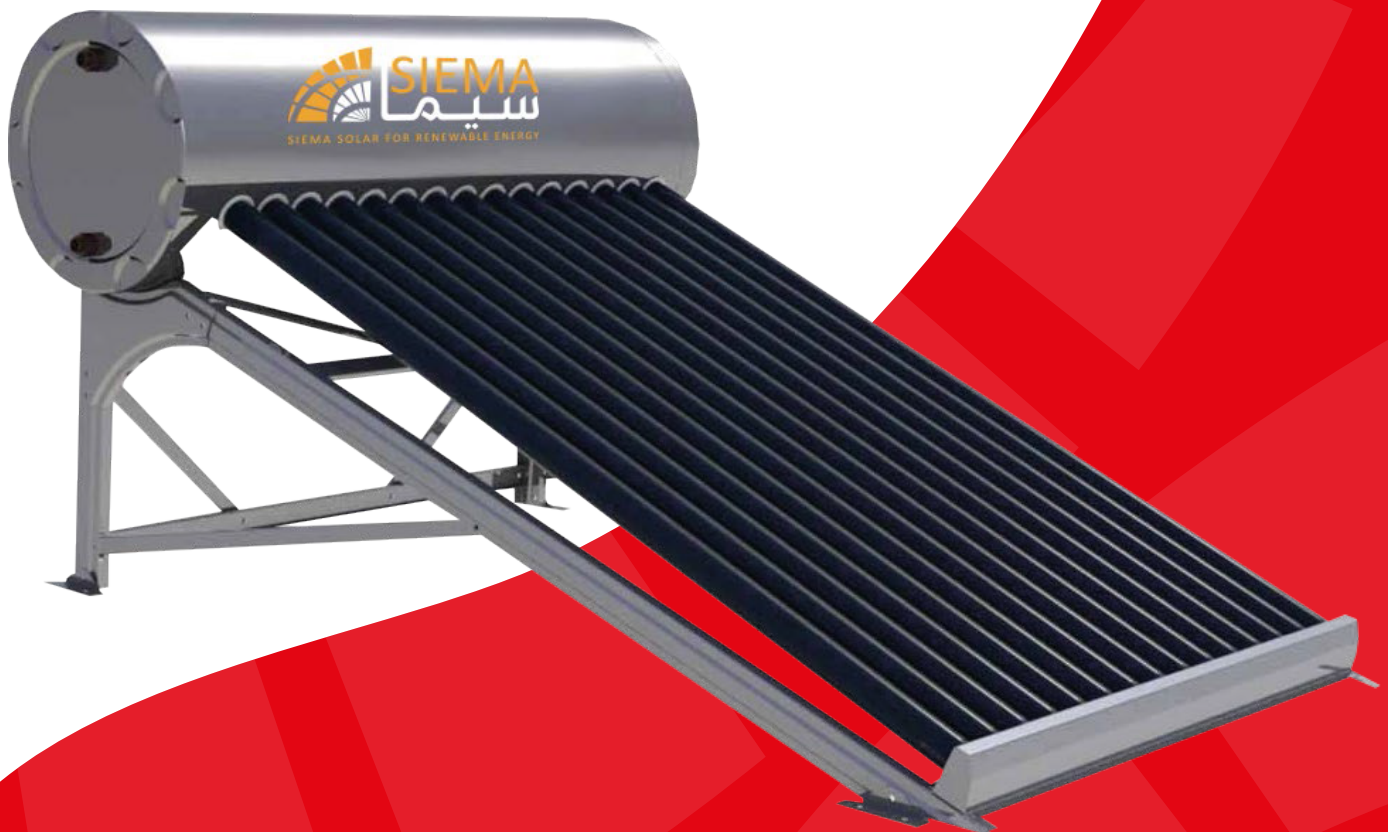
NON-PRESSURIZED SOLAR WATER HEATER

BRIEF SPECIFICATION:

- Inner tank: is made of stainless steel SUS304 thickness: 0.5 mm, stainless steel SUS304/SUS316; thickness: 1.0 mm - 1.2 mm or galvanized steel - G90; thickness: 2 mm.
- Outer tank: Pre-painted galvanized steel/ aluminum-zinc coated or powdered coated galvanized steel, 0.5 mm.
- Insulation: polyurethane 60-50mm thickness.
- Vacuum tube: QB-AL-N/AL, 1800-58.
- Frame: coated galvanized steel.

SOLAR WATER TANK:

- The tank is made of stainless steel SUS 304/316 which belongs to food grade and have better resistance to corrosion.
- The tank is non-pressurized, it should always be opened to meet the atmosphere pressure.
- The tank should always be filled with water to avoid any damage to the tank.



Type	Glass-Glass Evacuated Tube
Pressure	Non-pressurized
Method of Heating	Indirect, Close lope
Method of Connection	Split
Product v Model	VST/ VST DX / VGT
No. of Tubes	30 - 24 - 20 - 18 - 15, and as requested

Model	No. of tubes	System capacity (liter)	Absorbing area (m ²)	Aperture area (m ²)	Weight (kg)	Dimensions (mm)		
						Width	Depth	Hight
VST/VST DX /VGT 15	15	170/188/170	2.09	1.4	103/90/74	1350	1620	1680
VST/VST DX /VGT 18	18	197/222/197	2.48	1.69	117/99/81	1610	1620	1680
VST/VST DX /VGT 20	20	224/245/224	2.76	1.88	125/105/86	1750	1620	1680
VST/VST DX /VGT 24	24	267/290/267	3.31	2.26	141/116/95	2070	1620	1680
VST/VST DX /VGT 30	30	333/347/333	4.14	2.82	165.5/133/109	2550	1620	1680
Vacum tube size			Ø58 x 1800			Specifications are subject to change without prior notice.		
Maximum working pressure			0.5 bar					
Steel thickness of inner tank:			0.5 mm					

Note: thickness of the stainless steel of the inner tank may be changed upon request.

